



Junior Makopola
+267 72 677 420
junior.makopola@seeff.com



Palma Mokibe
+267 76 450 393

palma.mokibe@seeff.com



Lebe Kgosisdialwa
+267 72 553 786

lebe.kgosisdialwa@seeff.com

Contact Botswana

267 3939372

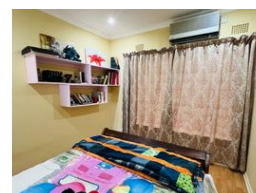
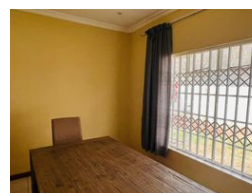
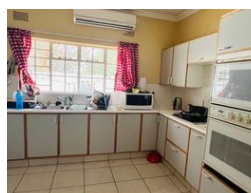
Plot 43173 Phakalane, Gaborone
393 9372

UNDER OFFER



SOLE MANDATE

Web Ref JM6063



BWP1,800,000

4 3 1

4 BED HOUSE WITH SWIMMING POOL FOR SALE AT PHAKALANE PHASE 1

JM6063.

Situated in Phakalane, Phase 1, this single-storey home offers a lifestyle of comfort, privacy, and convenience. Set within a quiet cul-de-sac, the property enjoys easy access to excellent amenities including Phakalane School, Phakalane Golf Resort, and the Mowana Park shopping complex.

Occupying a 900m² plot, the residence combines modern family living with secure surroundings. Entry is via a motorized double steel gate leading to a double garage, with the entire property enclosed by a boundary wall topped with electric fencing.

Interiors

Spanning approximately 259m², the home welcomes you with an entrance veranda that flows into a warm family room with a fireplace and direct pool access. The layout further includes a dining room, second lounge, and a well-fitted kitchen complete with stainless steel double sink,...

Features

Pets Allowed Yes

Interior

Bedrooms	4
Bathrooms	3
Kitchens	1
Recep. Rooms	3
Furnished	No

Exterior

Garages	1
Carports / Parkings	1
Security	Yes
Dom. Accom.	1
Pool	Yes
Views	False

Sizes

Floor Size	259m ²
Land Size	900m ²

