



Sego Ramolefhe
+267 77 123 889
segomotso.ramolefhe@seeff.com



Lebe Kgosidialwa
+267 72 553 786

lebe.kgosidialwa@seeff.com

Contact Botswana

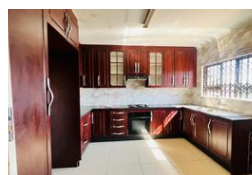
267 3939372

Plot 43173 Phakalane, Gaborone
393 9372

RENTED



Web Ref SR5890



BWP8,000 pm

Lease Period 24 months
Annual Escalation -

Availability 01 Dec 2024

Deposit -

3 Bedrooms 2 Bathrooms 2 Garages

Modern & Secure 3-Bedroom Rental Oasis in Pilane – Available Immediately!

SR5890

This modern and secure 3-bedroom home in Pilane is available for rent immediately at P8,000 per month, with an equivalent security deposit. This beautifully designed property features a spacious master bedroom complete with a walk-in closet, private bathroom (with shower, tub, toilet, and wash basin), and an exclusive sliding-door entry, filling the room with natural light. The other two bedrooms are air-conditioned and fitted with ample storage. Inside, the layout includes a fully-fitted kitchen, a dining area, a cozy lounge, a guest toilet, and a common bathroom with a bathtub, shower, and vanity. Every detail of this home has been carefully considered to offer modern convenience and style. For added peace of mind, the property comes with an alarm system, double electric fencing, floodlights, and security bars on all...

Features

Pets Allowed	Yes		
Interior		Exterior	
Bedrooms	3	Garages	2
Bathrooms	2	Security	Yes
Kitchens	1	Dom. Accom.	1
Recep. Rooms	2	Pool	No
Furnished	No	Views	False

