



Maria De Angelis
+267 72 469 838
maria.deangelis@seeff.com



Palma Mokibe
+267 76 450 393

palma.mokibe@seeff.com

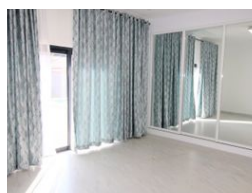
Contact Botswana

267 3939372

Plot 43173 Phakalane, Gaborone
393 9372



Web Ref MDA5566



BWP25,000 pm

Lease Period 24 months
Annual Escalation -

Availability Immediately

Deposit -

4 4

Modern ,comfortable, bright , new and just a short distance from Riverwalk

MDA5566

Open plan lounge/ dining , modern Kitchen with scullery, study, 4 ensuite bedrooms, guest toilet, staff room, external covered entertainment area with braai and overlooking a lovely established garden and sparkling pool. Ideal home for entertaining , offers space, light, clean lines and ain close proximity to shopping centres, schools and all amenities.

The home offers:

- Fitted with CCTV, Alarm, and beams.
- New air conditioners throughout.
- Power back up
- Water jojo tanks for back up.

Must be seen to appreciate.

Features

Pets Allowed Yes

Interior

Bedrooms	4
Bathrooms	4
Kitchens	1
Recep. Rooms	2
Studies	1
Furnished	No

Exterior

Security	Yes
Dom. Accom.	1
Pool	Yes
Views	False

Extras

Alarm System Outdoor Beams Closed Circuit TV Electric Fencing

