



**Letso Palai**  
+267 77 075 986  
letso.palai@seeff.com



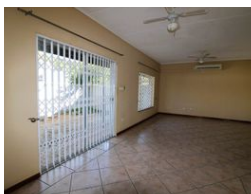
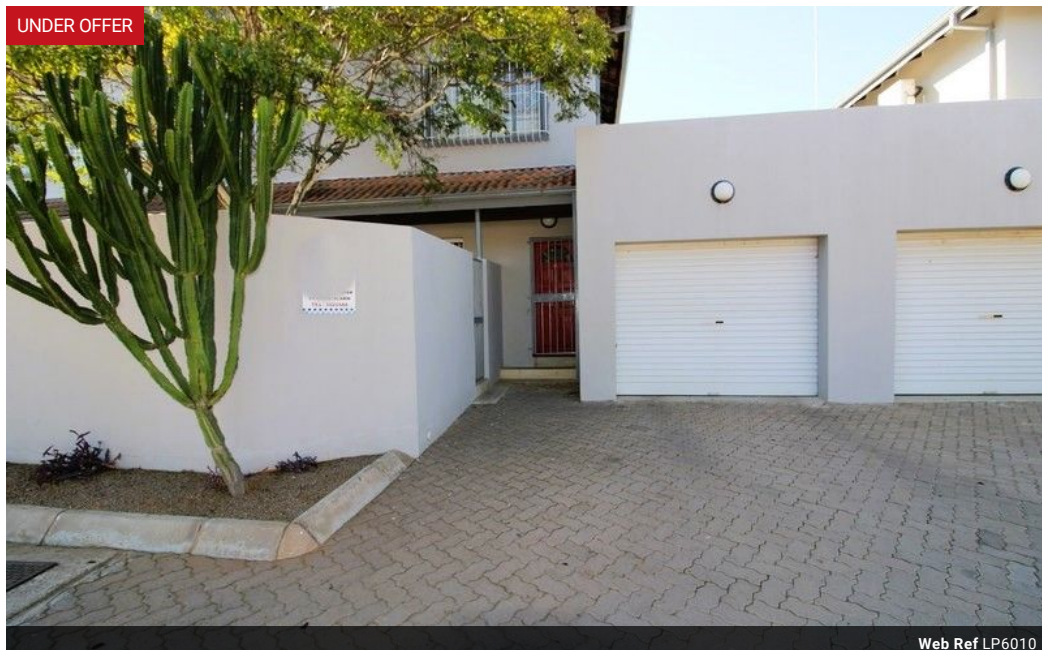
**Palma Mokibe**  
+267 76 450 393

palma.mokibe@seeff.com

Contact Botswana

267 3939372

Plot 43173 Phakalane, Gaborone  
393 9372



**BWP9,000 pm**

**Lease Period** 24 months  
**Annual Escalation** -

**Availability** Immediately

**Deposit** -

3 2 1

### Charming 3-Bedroom Townhouse in Secure Phakalane Estate – With Communal Pool

LP6010

Located in the sought-after Phakalane Phase 1, this well-maintained 3-bedroom townhouse offers modern living in a secure and serene environment. Perfect for families or professionals, the home combines comfort, convenience, and community amenities.

#### Property Features:

3 Spacious Bedrooms – Including a master ensuite with built-in wardrobes.

Modern Kitchen – Fully fitted with ample storage and quality finishes.

Open-Plan Lounge & Dining Area – Bright and airy, ideal for entertaining or relaxing.

Private Courtyard/Garden – Low-maintenance outdoor space for personal use.

Communal Pool Area – Shared with other residents, perfect for leisure and socializing.

24-Hour Security – Located within a secure, gated complex with controlled access.

### Features

#### Interior

Bedrooms	3
Bathrooms	2
Kitchens	1
Recep. Rooms	2
Furnished	No

#### Exterior

Garages	1
Carports / Parkings	1
Security	Yes
Pool	Yes
Views	False

