



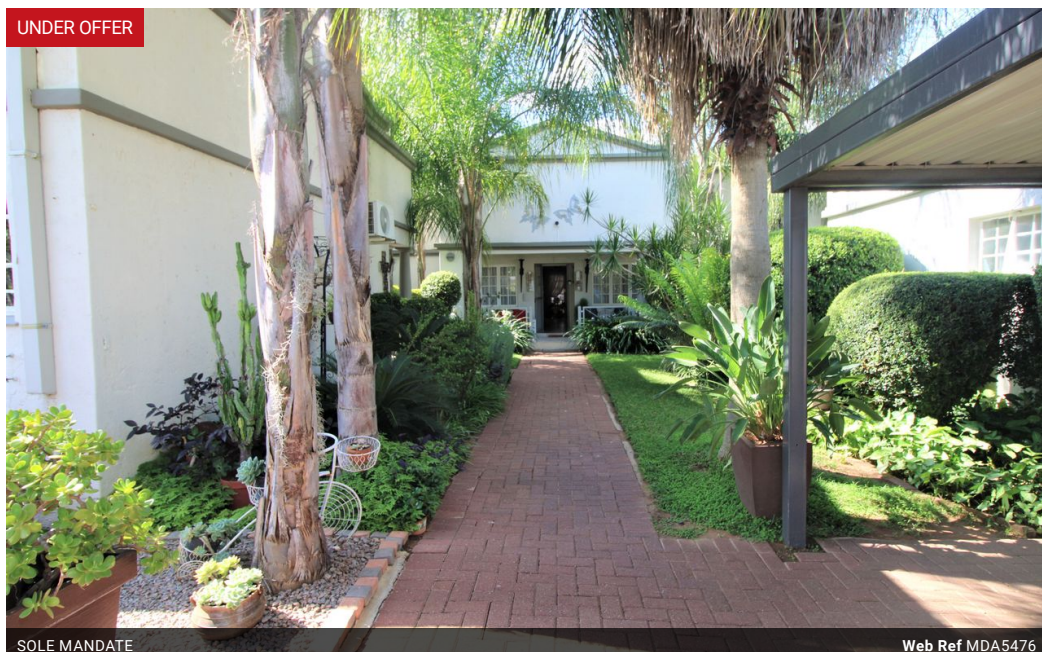
**Maria De Angelis**  
+267 72 469 838  
maria.deangelis@seeff.co.bw

Contact Botswana

267 3939372

Plot 43173 Phakalane, Gaborone  
393 9372

UNDER OFFER



SOLE MANDATE

Web Ref MDA5476



**BWP22,000 pm**

**Lease Period** 24 months  
**Annual Escalation** -

**Availability** 01 Aug 2025

**Deposit** -

3 2 2

Spectacular family home with cottage.

MDA5476

Main house has 3 bedrooms, main ensuite and 2 bedrooms share a full bathroom. Large open plan lounge, dining room and open plan kitchen, separate scullery, formal dining and a great entertainment enclosed patio with braai. Garden to envy with large pool, a separate self contained cottage. In addition plenty of parking area and a generator. Secure estate of Mochudi loop.

Just beautifully presented and lucky the family that occupies, will not be on the market for long.

In a secure now guarded estate in Phase 2 Phakalane.

### Features

#### Interior

Bedrooms	3
Bathrooms	2
Kitchens	1
Recep. Rooms	2
Furnished	No

#### Exterior

Garages	2
Carports / Parkings	2
Security	Yes
Dom. Accom.	1
Pool	Yes
Views	False

