



Palma Mokibe
+267 76 450 393
palma.mokibe@seeff.com

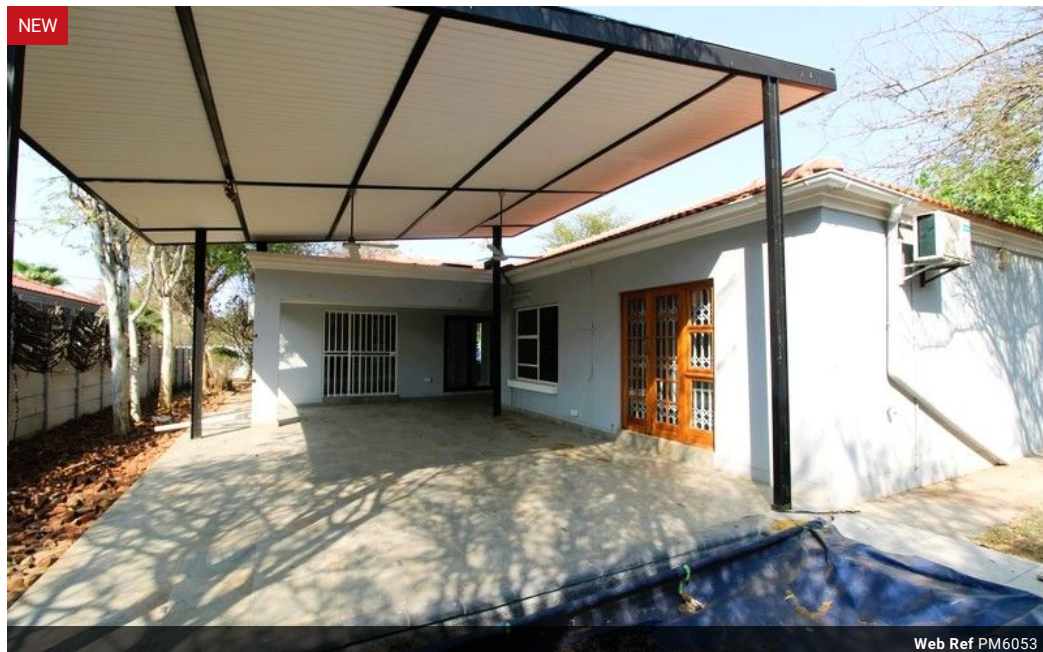


Letso Palai
+267 77 075 986
letso.palai@seeff.com

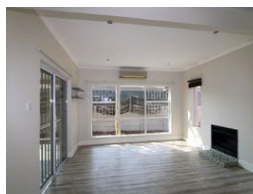
Contact Botswana

267 3939372

Plot 43173 Phakalane, Gaborone
393 9372



Web Ref PM6053



BWP14,000 pm

Lease Period 24 months
Annual Escalation -

Availability Immediately

Deposit -

3 2 2

Stunning Bungalow in Phakalane's gated Boiketlo Estate

PM6053

Experience refined living in this exceptional 3-bedroom bungalow, nestled within the gated, secure confines of Boiketlo Estate in Phakalane, an upmarket, self-contained suburb offering tranquility and convenience.

There are three comfortable bedrooms inclusive of an ensuite to provide you with restful retreats. The contemporary open-plan kitchen flows into a practical scullery, perfect for organized cooking and storage, while living and dining areas offer an inviting, cohesive flow designed for modern family living. This space open out to a family friendly outdoor oasis, a generously sized yard offering abundant outdoor space, complemented by a covered patio, ideal for outdoor dining or lounging, and a swimming pool perfect for relaxation and entertaining. Enjoy ample parking with a double garage. Security is enhanced...

Features

Pets Allowed	Yes		
Interior		Exterior	
Bedrooms	3	Garages	2
Bathrooms	2	Security	Yes
Kitchens	1	Dom. Accom.	1
Recep. Rooms	2	Pool	Yes
Furnished	No	Views	False

