



Palma Mokibe
+267 76 450 393
palma.mokibe@seeff.com



Maungo Ndlovu
+267 74 230 528

maungo.ndlovu@seeff.com

Contact Botswana

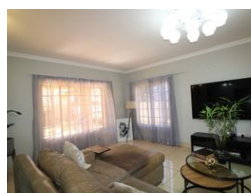
267 3939372

Plot 43173 Phakalane, Gaborone
393 9372



SOLE MANDATE

Web Ref PM6037



BWP16,000 pm

Lease Period 24 months
Annual Escalation -

Availability 01 Sep 2025

Deposit -

5 4 2

Comfort meets function in the gated estate house

PM6037

5 Spacious Bedrooms, including 3 spacious ensuites perfectly tailored for your family and guest comfort. There is an Open-Plan Kitchen, Living & Dining providing a seamless flow between indoor and outdoor spaces. The covered patio provides an ideal year round entertaining outdoor lifestyle. This is complemented by an inviting swimming pool that makes hosting effortless and enjoyable. You are also spoilt with a pyjama lounge for flexibility accompanied by a covered balcony terrace, ideal for morning coffee with scenic views and also catering for those family game nights. Adjacent to the house is a Staff House, complete with privacy and convenience for live in helper or you can turn it into a granny's house/ guest room. This home adapts to your lifestyle as it also gives you a peace of mind, safety, serene living within a...

Features

Pets Allowed	Yes		
Interior		Exterior	
Bedrooms	5	Garages	2
Bathrooms	4	Security	Yes
Kitchens	1	Dom. Accom.	1
Recep. Rooms	3	Pool	Yes
Furnished	No	Views	False

