



**Palma Mokibe**  
+267 76 450 393  
palma.mokibe@seeff.com



**Lebe Kgosidialwa**  
+267 72 553 786

lebe.kgosidialwa@seeff.com

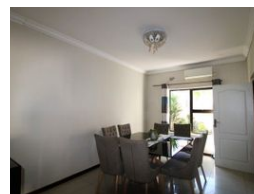
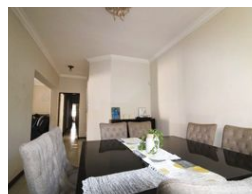
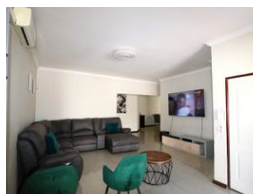
Contact Botswana

267 3939372

Plot 43173 Phakalane, Gaborone  
393 9372



Web Ref PM6006



**BWP14,000 pm**

**Lease Period** 24 months  
**Annual Escalation** -

**Availability** Immediately

**Deposit** -

4 4 2

### Spacious 4-Bedroom Family Home in Prime Neighborhood

PM6006

Nestled in a sought-after, family-friendly neighborhood, this beautifully maintained 4-bedroom home offers the perfect blend of comfort, style, and functionality. Ideal for both relaxed family living and entertaining, the property boasts generous living spaces and premium amenities.

Step inside to find four spacious bedrooms, including a master suite with ample closet space and an en-suite bathroom. The open-plan living and dining areas flow seamlessly into a modern kitchen with quality finishes and plenty of storage.

Outside, a sparkling swimming pool invites you to unwind, while the thatched lapa is the perfect setting for entertaining guests year-round. The lush, landscaped garden provides privacy and a peaceful outdoor retreat.

Additional features include well-appointed staff quarters, secure parking, and...

### Features

**Pets Allowed** Yes

#### Interior

Bedrooms	4
Bathrooms	4
Kitchens	1
Recep. Rooms	2
Furnished	No

#### Exterior

Garages	2
Security	Yes
Dom. Accom.	1
Pool	Yes
Views	False

