



Palma Mokibe
+267 76 450 393
palma.mokibe@seeff.com



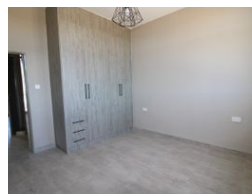
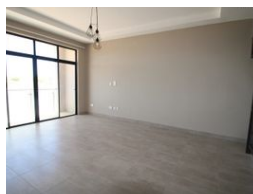
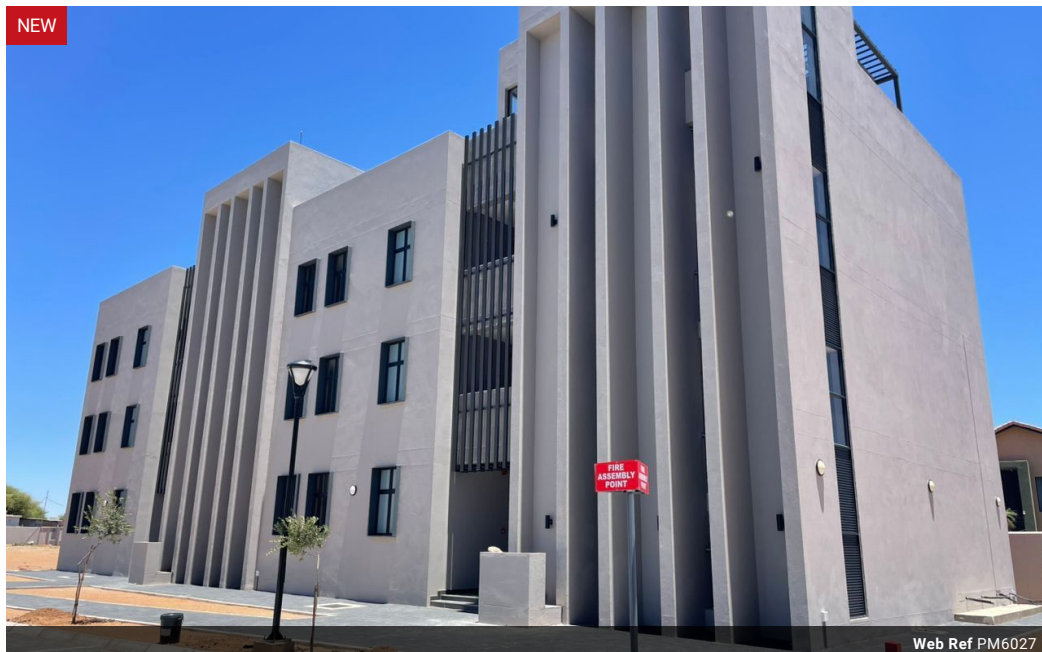
Maungo Ndlovu
+267 74 230 528

maungo.ndlovu@seeff.com

Contact Botswana

267 3939372

Plot 43173 Phakalane, Gaborone
393 9372



BWP6,300 pm

Lease Period 24 months
Annual Escalation -

Availability Immediately

Deposit -

1 1

Modern 1 bedroom apartment

This 1 bed apartment is located in the peaceful and well-established Peto Estate in Phakalane, offering a blend of modern living and convenience.

The apartment features:

- **Spacious Layout:** The open-plan living and dining area is bright and airy, with large windows allowing natural light to flow throughout the apartment.
- **Contemporary Kitchen:** The sleek, fully equipped kitchen comes with modern fittings and high-quality countertops. It includes a stove, and oven.
- **The apartment has one generously sized bedroom** with built-in wardrobe.
- **Modern Bathroom:** newly designed, with high-quality fittings and finishes, including a shower, toilet, and basin.
- **Secure Living:** The apartment is situated in a secure, gated community with 24-hour security, ensuring peace of mind for all residents.
- **Proximity to Amenities:** Located in...

Features

Interior

Bedrooms	1
Bathrooms	1
Kitchens	1
Recep. Rooms	1
Furnished	No

Exterior

Carports / Parkings	2
Security	Yes
Pool	No
Views	False