



**Kim Bekker**  
+267 71 630 755  
kim.bekker@seeff.com



**Palma Mokibe**  
+267 76 450 393

palma.mokibe@seeff.com



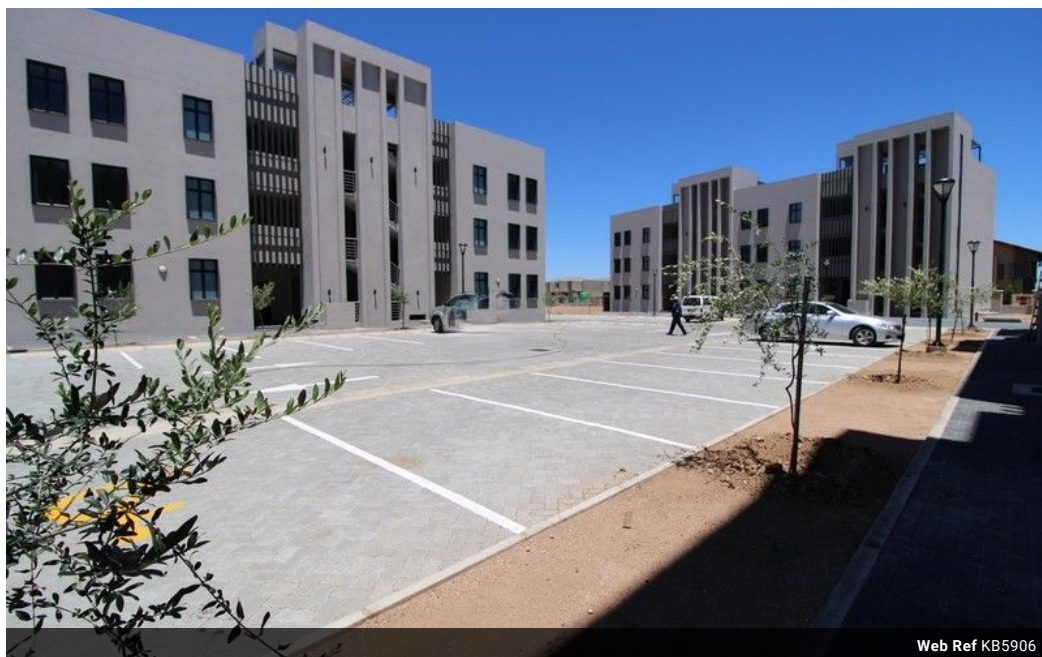
**Maungo Ndlovu**  
+267 74 230 528

maungo.ndlovu@seeff.com

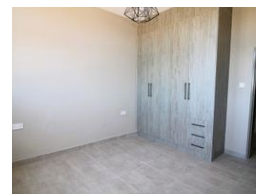
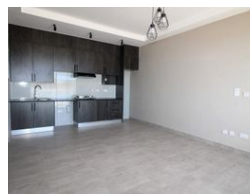
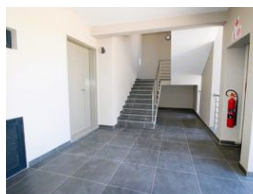
Contact Botswana

267 3939372

Plot 43173 Phakalane, Gaborone  
393 9372



Web Ref KB5906



**BWP8,300 pm**

**Monthly Levy** BWP450

**Lease Period** 24 months

**Availability** Immediately

**Deposit** - **Annual Escalation** -

2 2

### Modern Two-Bedroom Apartment for Rent in Peto Estate, Phakalane

KB5906

This newly built two-bedroom apartment is located in the peaceful and well-established Peto Estate in Phakalane, offering a blend of modern living and convenience. The apartment features:

- **Spacious Layout:** The open-plan living and dining area is bright and airy, with large windows allowing natural light to flow throughout the apartment.
- **Contemporary Kitchen:** The sleek, fully equipped kitchen comes with modern fittings, ample storage, and high-quality countertops. It includes a stove, oven, and space for additional appliances.
- **Two Comfortable Bedrooms:** The apartment has two generously sized bedrooms with built-in wardrobes, offering plenty of storage space. The master bedroom features an en-suite bathroom, while the second bedroom shares a well-appointed bathroom.
- **Modern Bathrooms:** Both bathrooms are newly...

### Features

#### Interior

Bedrooms	2
Bathrooms	2
Kitchens	1
Recep. Rooms	1
Furnished	No

#### Exterior

Carports / Parkings	1
Security	Yes
Pool	No
Views	False

