



**Maria De Angelis**  
+267 72 469 838  
maria.deangelis@seeff.com



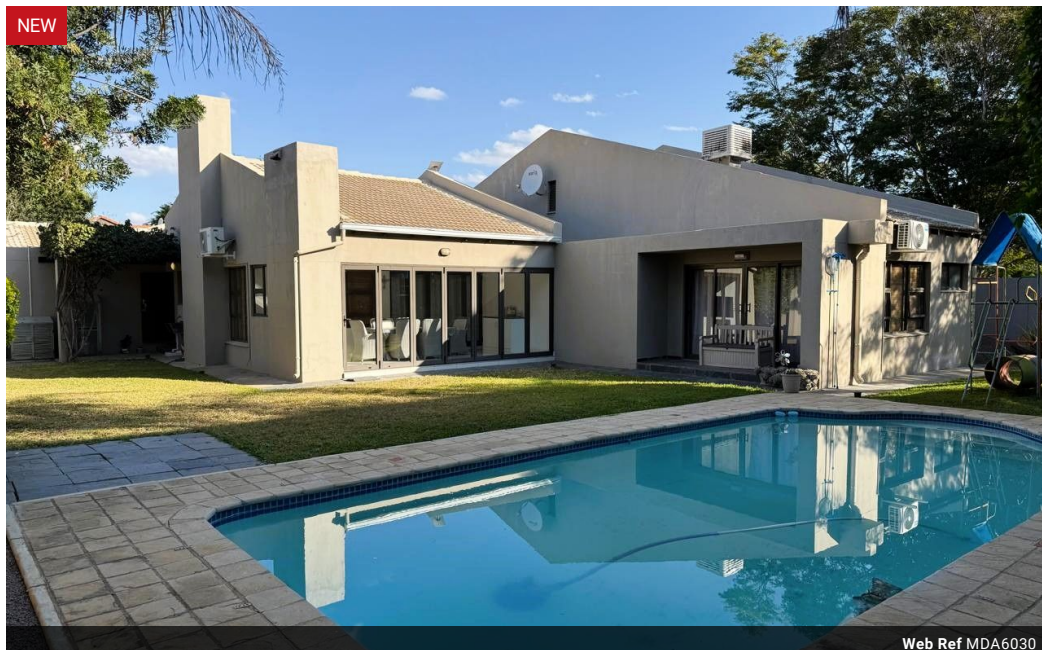
**Palma Mokibe**  
+267 76 450 393

palma.mokibe@seeff.com

Contact Botswana

267 3939372

Plot 43173 Phakalane, Gaborone  
393 9372



Web Ref MDA6030



**BWP27,000 pm**

**Monthly Levy** BWP1,950

**Lease Period** 24 months

**Availability** Immediately

**Deposit** - **Annual Escalation** -

4 3 2

Immaculate, Tasteful and Class

MDA6030

Neat and bright home on the sought after Golf Estate features Open plan living areas , well appointed kitchen with scullery and separate laundry leading to the double garage.

4 bedrooms, 3 bathrooms, spacious linen storage room. The lounge leads onto covered patio overlooking the neat garden and pool.

The home is airconditioned , tiled and just so welcoming!

Your chance to have the lifestyle you are seeking in a secure and healthy environment and in a quiet cul de sac. Hurry!

### Features

<b>Pets Allowed</b>	Yes				
<b>Interior</b>		<b>Exterior</b>		<b>Sizes</b>	
Bedrooms	4	Garages	2	Land Size	1,000m²
Bathrooms	3	Security	Yes		
Kitchens	1	Dom. Accom.	1		
Recep. Rooms	2	Pool	Yes		
Studies	1	Views	False		
Furnished	No				

