



Maria De Angelis
+267 72 469 838
maria.deangelis@seeff.com

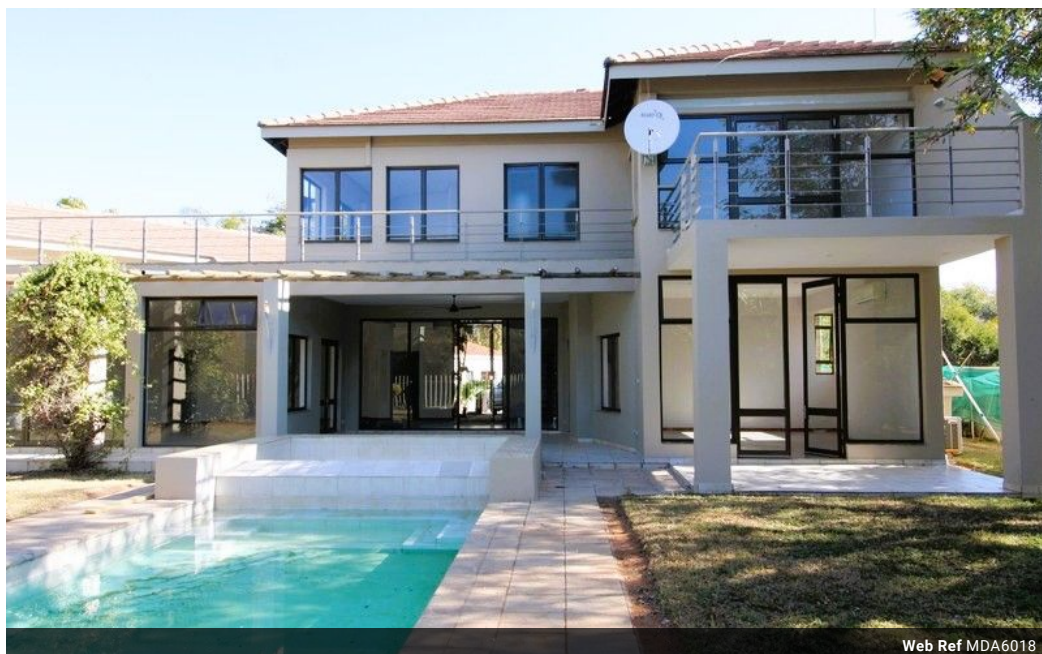


Kim Bekker
+267 71 630 755
kim.bekker@seeff.com

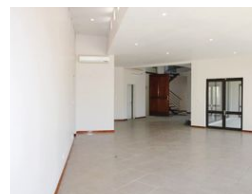
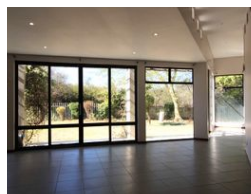
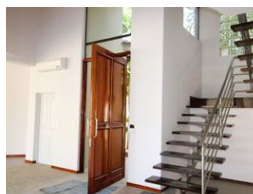
Contact Botswana

267 3939372

Plot 43173 Phakalane, Gaborone
393 9372



Web Ref MDA6018



BWP30,000 pm

Monthly Levy BWP1,950

Lease Period 24 months

Availability Immediately

Deposit - **Annual Escalation** -

5 4 2

A view worth sharing in the luxury of space and lifestyle on the Golf Estate

MDA6018

A bright cheerful home in a quiet cul de sac with large living areas and 5 bedrooms 2 of which are downstairs. A covered patio overlooks the pool and pristine gardens. East facing, large doors allow open views of the Phakalane nature and fairways. 3 bedrooms including the main is upstairs and all 3 are ensuite, staff room, double garage, generator and good security are all included. A very private home.

Features

Pets Allowed Yes

Interior

Bedrooms	5
Bathrooms	4
Kitchens	1
Recep. Rooms	3
Studies	1
Furnished	No

Exterior

Garages	2
Carports / Parkings	2
Security	Yes
Dom. Accom.	1
Pool	Yes
Views	True