



Maria De Angelis
+267 72 469 838
maria.deangelis@seeff.com



Palma Mokibe
+267 76 450 393

palma.mokibe@seeff.com

Contact Botswana

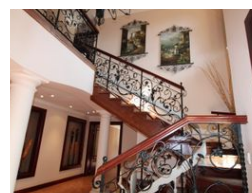
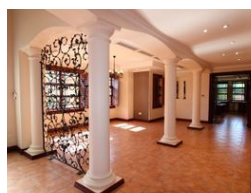
267 3939372

Plot 43173 Phakalane, Gaborone
393 9372



SOLE MANDATE

Web Ref MDA5814



BWP45,000 pm

Monthly Levy BWP1,950

Lease Period 24 months

Availability Immediately

Deposit - Annual Escalation -

4 4 2

Gracious and elegant living on the Golf Estate. This home is unique and simply breath-taking.

MDA5814

Step in to this stately home and instantly feel the elegance of the vast living areas, high ceilings and open flow on to the entertainment area and through to the lush, landscaped garden. The home is unique as it is set on a large and secluded plot surrounded by green space with no neighbours. If you are looking for privacy, this is the home for you.

The ground floor boasts spacious reception rooms, dining room, a large stylish kitchen with breakfast area, scullery, laundry and pantry... everything you need for hosting guests or just to enjoy with your family. The kitchen is fitted with solid wood cabinetry and includes the dishwasher a 6 burner gas top and ovens. A separate laundry and pantry is adjacent. There is space for everyone in this home. The living areas open up with bespoke sliding doors on to the expansive...

Features

Pets Allowed Yes

Interior

Bedrooms	4
Bathrooms	4
Kitchens	1
Recep. Rooms	3
Studies	1
Furnished	No

Exterior

Garages	2
Carports / Parkings	1
Security	Yes
Dom. Accom.	1
Pool	Yes
Views	True

Sizes

Land Size	1,699m ²
-----------	---------------------

Extras

Air Conditioner

