



**Kim Bekker**  
+267 71 630 755  
kim.bekker@seeff.com



**Lebe Kgosidialwa**  
+267 72 553 786

lebe.kgosidialwa@seeff.com

Contact Botswana

267 3939372

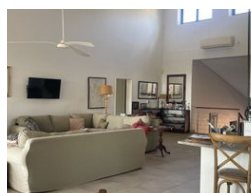
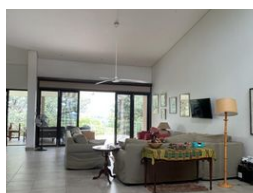
Plot 43173 Phakalane, Gaborone  
393 9372

FEATURED



SOLE MANDATE

Web Ref KB6035



**BWP12,000,000**

3 3

### Kazungula Forest Retreat

KB6035  
Plot 1.7 hectares, fully fenced, electric gate.

#### Main House

540 m<sup>2</sup> built over three floors in 2015.

Upper floor: main living space — open plan lounge/dining/kitchen with large covered veranda; scullery; walk-in pantry; large master bedroom and en-suite bathroom; private covered veranda.

Middle floor: office; guest toilet; laundry.

Lower floor: two en-suite bedrooms; library/TV room; storeroom; large covered veranda; swimming pool.

Dual hot water system incorporating solar, heat exchange, and electric immersion heaters.

All rooms have Trellidor Clearguard security gauze, ceiling fans, and air conditioners.

There are extensive views over the Chobe and Zambezi Rivers taking in four countries.

#### Additional Buildings

Three detached 2-bedroom cottages with covered verandas. Two are fully equipped for self-catering with solar

### Features

<b>Pets Allowed</b>	Yes				
<b>Interior</b>		<b>Exterior</b>		<b>Sizes</b>	
Bedrooms	3	Carports / Parkings	3	Floor Size	540m²
Bathrooms	3	Security	Yes	Land Size	2Ha
Kitchens	1	Pool	Yes		
Recep. Rooms	3	Views	True		
Furnished	No				
<b>Extras</b>					
cottages					