



**Maria De Angelis**  
+267 72 469 838  
maria.deangelis@seeff.com



**Lebe Kgosidialwa**  
+267 72 553 786

lebe.kgosidialwa@seeff.com

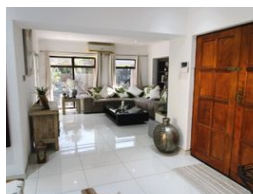
Contact Botswana

267 3939372

Plot 43173 Phakalane, Gaborone  
393 9372



Web Ref MDA6034



**BWP3,450,000**

Monthly Levy BWP425

3 2 2

### Elegance & Comfort in a Prime Neighborhood

MDA6034

Nestled in one of the most sought-after areas of Phakalane. Boiketlo is a suburb where most homeowners have significantly upgraded their properties—resulting in an elegant, clean, secure, and welcoming community atmosphere with 24/7 security access and complemented with a neat park.

We are proud to present this stunning home to market. Its impressive curb appeal immediately sets it apart, and the moment you arrive, the striking presentation captures your attention. Built with superior-quality materials and exquisite finishes throughout, this home has been thoughtfully designed to suit Botswana's climate while offering privacy and comfort.

The paved front yard includes a double garage and a carport, with additional parking space for up to three more vehicles. For added security and privacy, the front and rear areas...

### Features

<b>Pets Allowed</b>	Yes				
<b>Interior</b>		<b>Exterior</b>		<b>Sizes</b>	
Bedrooms	3	Garages	2	Floor Size	305m²
Bathrooms	2	Carports / Parkings	2	Land Size	909m²
Kitchens	1	Security	Yes		
Recep. Rooms	4	Pool	Yes		
Furnished	No	Views	False		

