



**Palma Mokibe**  
+267 76 450 393  
palma.mokibe@seeff.com



**Letso Palai**  
+267 77 075 986  
letso.palai@seeff.com

Contact Botswana

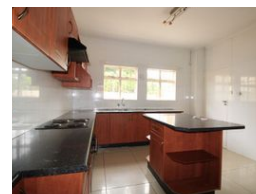
267 3939372

Plot 43173 Phakalane, Gaborone  
393 9372



SOLE MANDATE

Web Ref PM5901



**BWP2,800,000**

4 3 2

Home for sale in a Secured Gated Estate

PM5901

Walk into this spacious home straight into an entrance hall, lovely fireplace in the lounge, there is a glass door separating the dining from the living room, then expands into the kitchen with a scullery. The downstairs bedroom is accommodating to the elderly if you are staying with your parents, air conditioned and ensuited.

Upstairs has 3 more bedrooms, balcony and common bathroom. There is a double garage with plenty of extra parking space, an inviting swimming pool and a covered verandah for your entertainment space.

### Features

Pets Allowed		Yes			
Interior				Exterior	
Bedrooms	4			Garages	2
Bathrooms	3			Security	Yes
Kitchens	1			Pool	Yes
Recep. Rooms	2			Views	False
Furnished	No				
Extras				Sizes	
Gated Community Air Conditioner				Land Size	671m <sup>2</sup>

