



Maria De Angelis
+267 72 469 838
maria.deangelis@seeff.com



Kim Bekker
+267 71 630 755
kim.bekker@seeff.com

Contact Botswana

267 3939372

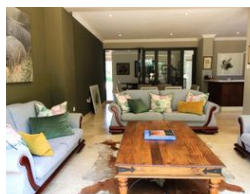
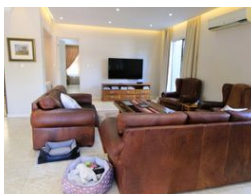
Plot 43173 Phakalane, Gaborone
393 9372

UNDER OFFER



SOLE MANDATE

Web Ref MDA5934



BWP7,000,000

Monthly Levy BWP1,950

5 5 2

Amazing home

MDA5934

This home located in the Golf Estate is nestled amongst trees with lawns and overlooking the bush. Offers total serenity, peace and tranquility and many birds endemic to the area. A uniquely designed family home with 4 bedrooms upstairs and the 5th bedroom is downstairs. There are ample living areas on both floors the upstairs offers a large study/lounge and man cave which open out to a balcony. Downstairs are 2 lounges, the dining area, a well appointed fitted kitchen with a large separate scullery which lead to the courtyard. A full back up generator ensures no power interruptions to the home fitted with Single phase electricity. In addition is an ensuite staff room and a large storage room. For entertaining the home offers the enclosed open plan veranda with barbecue, a bar area and the outdoor dining...

Features

Pets Allowed Yes

Interior

Bedrooms	5
Bathrooms	5
Kitchens	1
Recep. Rooms	4
Studies	1
Furnished	No

Exterior

Garages	2
Security	Yes
Dom. Accom.	1
Pool	Yes
Views	True

Sizes

Floor Size	450m ²
Land Size	767m ²

Extras

24 Hour Access Air Conditioner Country Living Estate Gated Community Residential Golf Estate

