



Maria De Angelis
+267 72 469 838
maria.deangelis@seeff.com

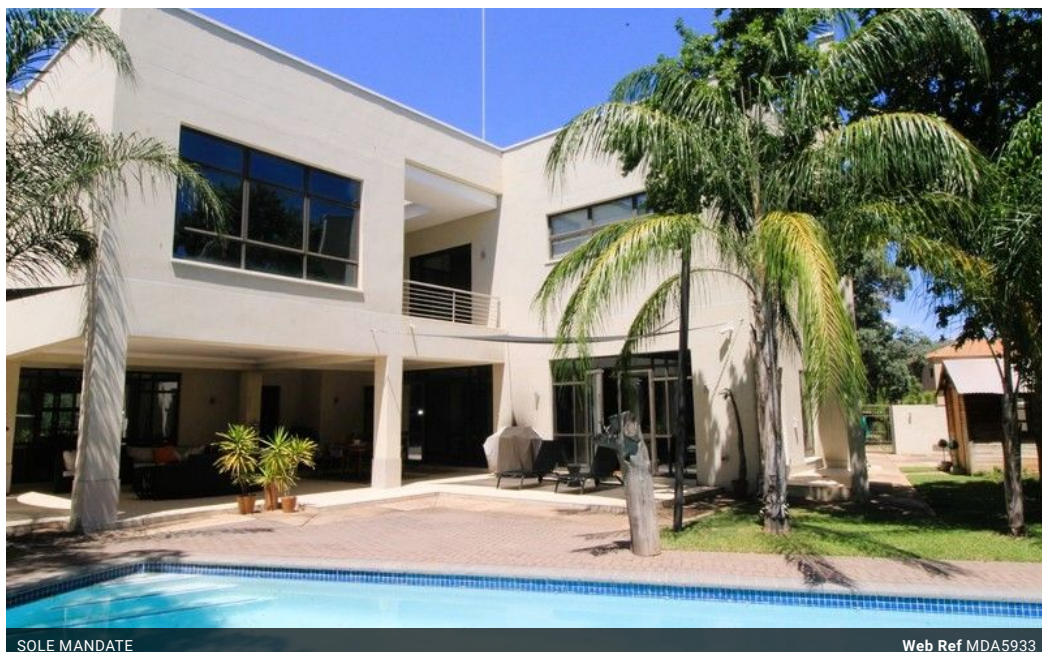


Kim Bekker
+267 71 630 755
kim.bekker@seeff.com

Contact Botswana

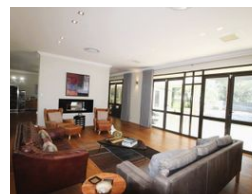
267 3939372

Plot 43173 Phakalane, Gaborone
393 9372



SOLE MANDATE

Web Ref MDA5933



BWP10,900,000

Monthly Levy BWP1,950

4 4 2

Spacious and Stylish Elegance

MDA5933

This home, located in an idyllic area of the Phakalane Golf Estate, is simply stunning. The layout, features and flow speak to the luxurious feeling of the property. Featuring 4 generous en-suite bedrooms, 3 lounges, open plan kitchen to dining room, a large study and much more, the home is definitely designed for the executive lifestyle. Entertaining is made easy with both indoor and outdoor dining and entertainment spaces with a spectacular veranda overlooking the swimming pool.

The attention to detail and finishes of the home will appeal to a discerning buyer who is looking for a luxurious home. Travertine tiles and solid rosewood finishes are standard throughout.

The home is set in a well-established garden that overlooks the golf course yet is set back enough to ensure privacy and a feeling of seclusion. The...

Features

Pets Allowed		Yes		
Interior			Exterior	
Bedrooms	4		Garages	2
Bathrooms	4		Security	Yes
Kitchens	1		Dom. Accom.	1
Recep. Rooms	4		Pool	Yes
Studies	1		Views	False
Furnished	No			
			Sizes	
			Floor Size	540m ²
			Land Size	1,318m ²

