



Maria De Angelis
+267 72 469 838
maria.deangelis@seeff.com



Palma Mokibe
+267 76 450 393

palma.mokibe@seeff.com

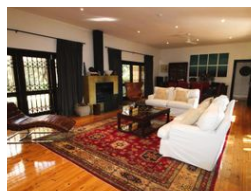
Contact Botswana

267 3939372

Plot 43173 Phakalane, Gaborone
393 9372



Web Ref MDA6033



BWP6,500,000

4 3 2

Elegant Family Estate in Mokolodi 1

MDA6033

Discover an exceptional property in the heart of Mokolodi 1, offering the perfect balance of tranquility, space, and development potential. Set on a sprawling 8,650m² of prime land, this unique estate includes a lovely family home set in a large garden and two subdivided plots—ideal for future expansion, guest accommodation, or investment.

Property Features:

The Main Residence

This beautifully maintained home offers approximately 550m² of elegant living space, designed for both comfort and functionality.

- 4 spacious bedrooms including a luxurious master suite with a full en-suite bathroom, ample wardrobe space, and garden access
- The 4th (guest) bedroom features a private entrance, making it ideal for a guest suite or Airbnb rental.
- A large spacious lounge with fireplace and an additional family room open...

Features

Pets Allowed		Yes			
Interior		Exterior		Sizes	
Bedrooms	4	Garages	2	Floor Size	550m²
Bathrooms	3	Security	Yes	Land Size	8,650m²
Kitchens	1	Dom. Accom.	1		
Recep. Rooms	3	Pool	Yes		
Studies	1	Views	False		
Furnished	No				

