



**Kim Bekker**  
+267 71 630 755  
kim.bekker@seeff.com



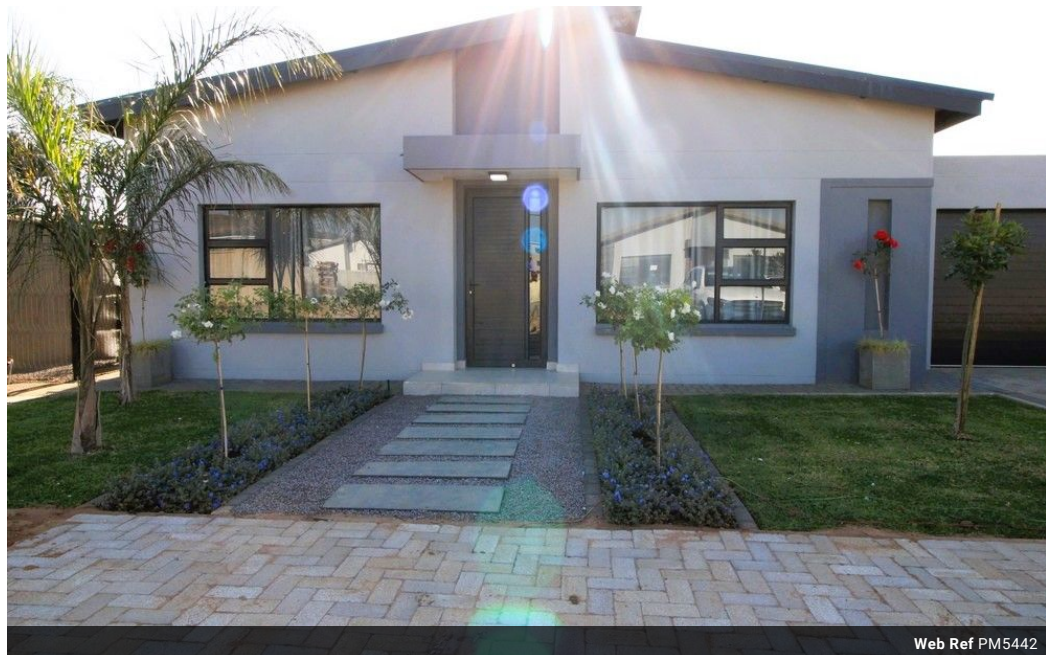
**Palma Mokibe**  
+267 76 450 393

palma.mokibe@seeff.com

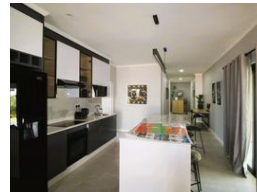
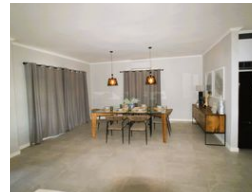
Contact Botswana

267 3939372

Plot 43173 Phakalane, Gaborone  
393 9372



Web Ref PM5442



**BWP2,699,884**

4 2 1

Sesha Mews - Secure, family-friendly, low density housing estate in Kgale

\*\*\* OFF-PLAN SALES \*\*\* NEW DEVELOPMENT \*\*\*

Sesha Mews is conveniently located in Kgale within close proximity to shopping centres, medical facilities, schools, and good transport routes. Sesha Mews offer off-plan sales of 3 and 4 bedroomed homes. Ideal for young families and first-time buyers, there are 4 designs to choose from and a host of optional finishes from roof coverings, paint colours, floor tiles and whether you would like an additional scullery or garage. You can personalise your home to your specification and budget. The complex is designed to be low to medium density so you can enjoy space and privacy while still benefiting from the secure environment the complex provides. Security features include a perimeter boundary wall, electric fence and 24-hour manned, access controlled entrance. For families and outdoor...

### Features

#### Interior

Bedrooms	4
Bathrooms	2
Kitchens	1
Recep. Rooms	2
Furnished	No

#### Exterior

Garages	1
Carports / Parkings	1
Security	Yes
Pool	No
Views	False

#### Sizes

Floor Size	173m <sup>2</sup>
------------	-------------------

