



Palma Mokibe
+267 76 450 393
palma.mokibe@seeff.com



Kim Bekker
+267 71 630 755
kim.bekker@seeff.com

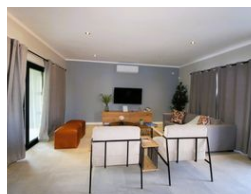
Contact Botswana

267 3939372

Plot 43173 Phakalane, Gaborone
393 9372



Web Ref SEEFF5725



Sesha Mews



Houses (86)
From BWP2,080,000
Size from 119m² to 173m²

SESHA MEWS - Secure and tranquil estate nestled in the foothills of Kgale Hill

*** OFF-PLAN SALES *** NEW DEVELOPMENT ***

Sesha Mews is conveniently located in Kgale within close proximity to shopping centres, medical facilities, schools and good transport routes, Sesha Mews offer off-plan sales of 3 and 4 bedroomed homes. Ideal for young families and first time buyers, there are 4 designs to choose from and a host of optional finishes from roof coverings, paint colours, floor tiles and whether you would like an additional scullery or garage. You can personalise your home to your specification and budget. The complex is designed to be low to medium density so you can enjoy space and privacy while still...

Features

□

