



**Sego Ramolefhe**  
+267 77 123 889  
segomotso.ramolefhe@seeff.com



**Lebe Kgosisdialwa**  
+267 72 553 786

lebe.kgosisdialwa@seeff.com

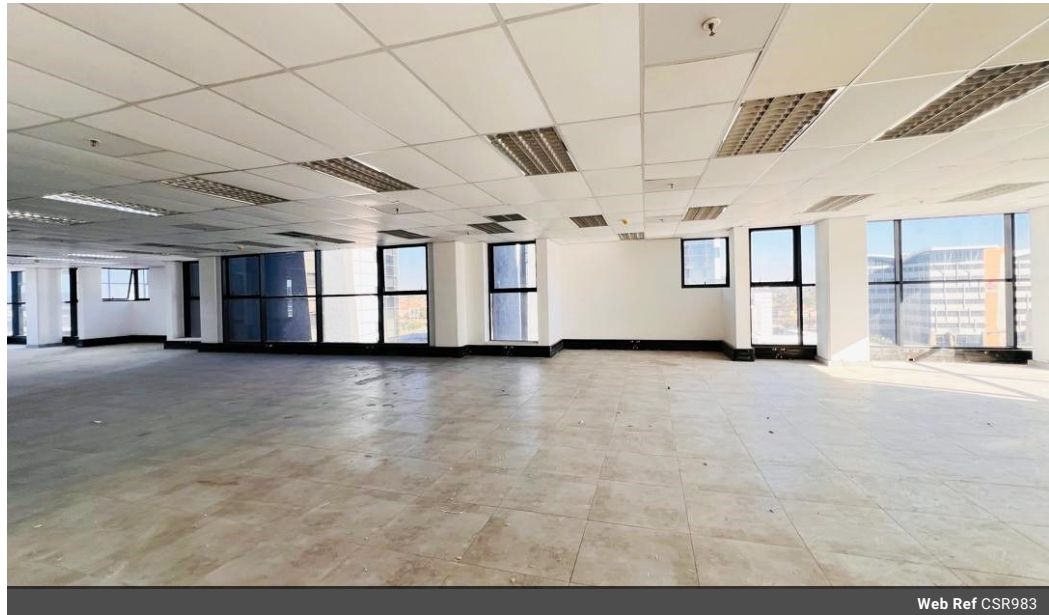


**Letso Palai**  
+267 77 075 986  
letso.palai@seeff.com

Contact Botswana

267 3939372

Plot 43173 Phakalane, Gaborone  
393 9372



Web Ref CSR983



**BWP97,750 pm**

**Gross Monthly Rental BWP97,750 Excl. VAT**

0 0

### 850sqm Near-Ready Premium Office Floor

CSR983

If you're looking to move quickly, Floor 5 is near-ready for occupancy. Measuring 850sqm, this A-Grade CBD office space combines a prime location with a faster move-in timeline compared to lower floors. Its readiness makes it particularly appealing for businesses eager to establish their base without extended fit-out delays.

Key Features:

Size: 850sqm

Rental: BWP 130.00/sqm (VAT exclusive)

Parking: 15 covered bays per floor (negotiable) at P450.00/bay

Facilities: Fully fitted male & female restrooms, service elevator

Utilities: Each floor separately metered for water & electricity

Fit-out: Space delivered in near-ready condition; beneficial occupancy can be provided for final customization

### Features

**Zoning** Commercial

**Exterior**

Security

Yes

**Sizes**

Floor Size

850m²

