



Sego Ramolefhe
+267 77 123 889
segomotso.ramolefhe@seeff.com



Lebe Kgosidialwa
+267 72 553 786

lebe.kgosidialwa@seeff.com

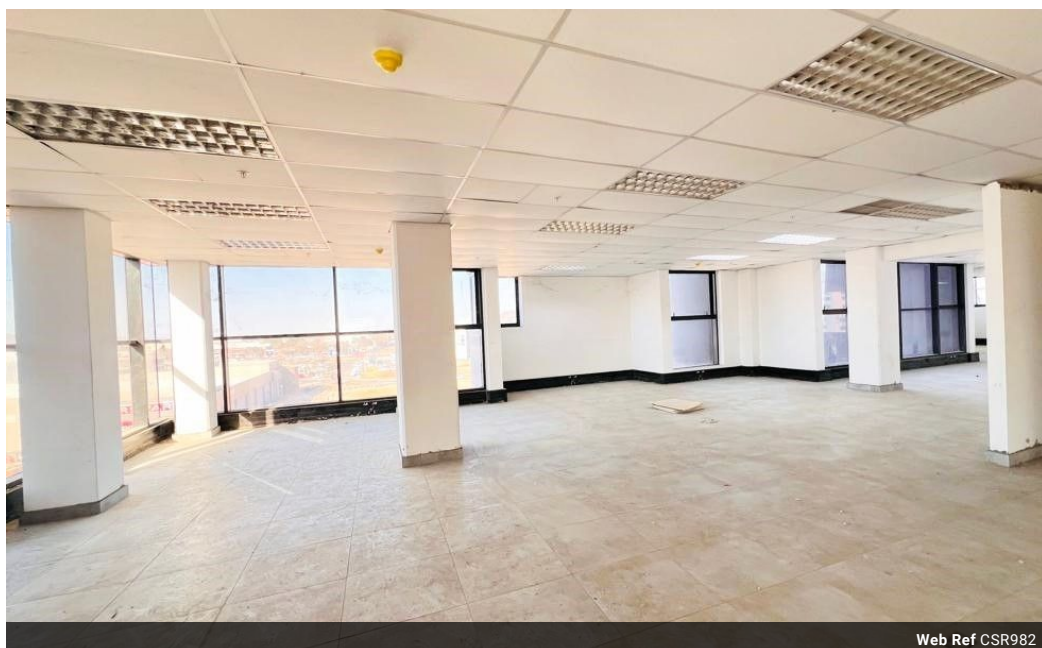


Letso Palai
+267 77 075 986
letso.palai@seeff.com

Contact Botswana

267 3939372

Plot 43173 Phakalane, Gaborone
393 9372



Web Ref CSR982



BWP97,750 pm

Gross Monthly Rental BWP97,750 Excl. VAT

15 0

850sqm Office Floor in the CBD Business Core

CSR982

Position your company at the heart of Botswana's commercial capital with this 850sqm office floor in an A-Grade CBD building. Floor 4 offers a balanced mix of functionality and flexibility, making it ideal for corporates, financial institutions, and professional firms.

Key Features:

Size: 850sqm (shell condition, full customization allowed)

Rental: BWP 115.00/sqm (VAT exclusive)

Parking: 15 covered bays per floor (negotiable) at P450.00/bay

Facilities: Male & female restrooms, service elevator

Utilities: Dedicated water & electricity meters

Fit-out: Beneficial occupancy offered to complete tenant fit-out

Features

Zoning Commercial

Exterior

Security Yes
Basement Parkings 15

Sizes

Floor Size 850m²

