



Letso Palai
+267 77 075 986
letso.palai@seeff.com



Sego Ramolefhe
+267 77 123 889
segomotso.ramolefhe@seeff.com



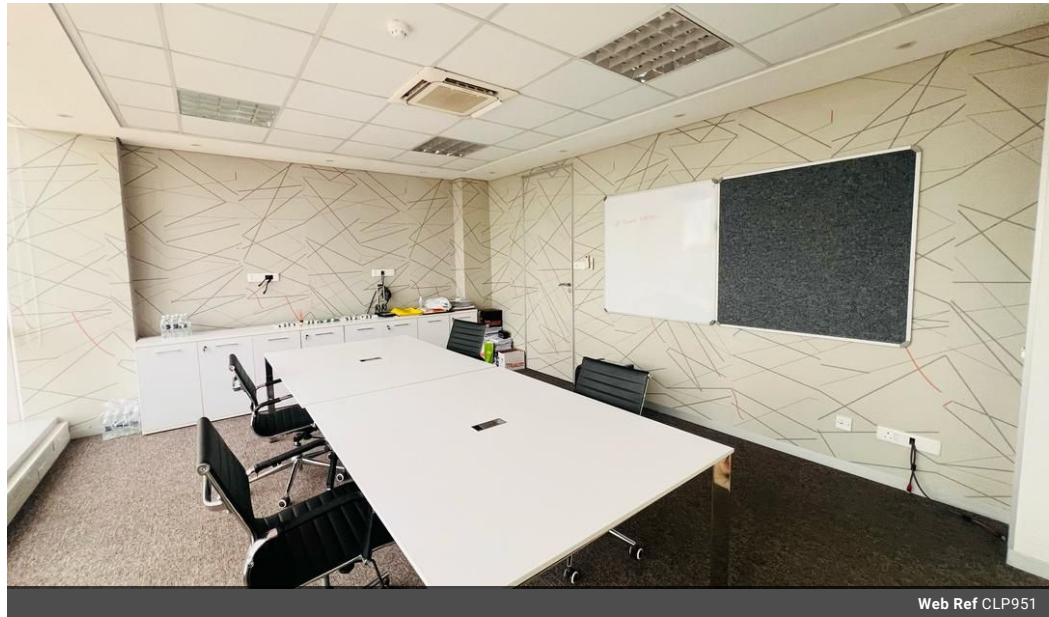
Lebe Kgosisdialwa
+267 72 553 786

lebe.kgosisdialwa@seeff.com

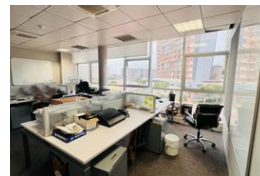
Contact Botswana

267 3939372

Plot 43173 Phakalane, Gaborone
393 9372



Web Ref CLP951



BWP31,325 pm

Gross Monthly Rental BWP31,325 Excl. VAT

0 0

Prime Office Space for Rent – Central District, Gaborone

CLP951

An exceptional opportunity to lease premium office space in the heart of Gaborone's Central District. Measuring 179.00m², this well-sized office offers the perfect balance of functionality, visibility, and value for businesses looking to establish or expand their presence in a sought-after commercial hub.

Key Features:

Size: 179.00m² – ideal for medium-sized teams or growing operations

Monthly Rental: P31,325.00

Levies: Charged based on usage, ranging from P2,000 to P5,000

Location: Centrally situated with easy access to major roads, banks, government offices, and amenities

Perfect Fit: Suitable for professional services, consultancies, or administrative headquarters

Don't miss out on this competitively priced, well-positioned office space – offering great value and flexibility in one of Gaborone's

Features

Zoning Commercial

Interior

Air Conditioning Yes

Exterior

Security Yes

Sizes

Floor Size 179m²

