



**Junior Makopola**  
+267 72 677 420  
junior.makopola@seeff.com



**Sego Ramolefhe**  
+267 77 123 889

segomotso.ramolefhe@seeff.com



**Lebe Kgosidialwa**  
+267 72 553 786

lebe.kgosidialwa@seeff.com

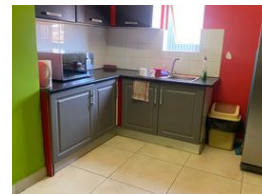
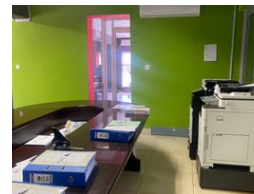
Contact Botswana

267 3939372

Plot 43173 Phakalane, Gaborone  
393 9372



Web Ref CJM911



**BWP11,590 pm**

Gross Monthly Rental BWP11,590 Excl. VAT

0 0

## First-Floor Office

Rental: P11,590.47/month (VAT exclusive) + Equivalent Security Deposit

Elevate your business in this premium 129 sqm first-floor office designed for collaboration and client engagement. This sleek space boasts all-glass partitions, two private offices suitable for 2-3 occupants each, a large boardroom perfect for brainstorming or client meetings, and a spacious open-plan workstation. The unit also features a modern kitchen and restroom area.

Step outside onto the stunning rooftop terrace measuring 143sqm, complete with sunset views that make it a standout for entertaining clients or hosting team events. Adjacent to the terrace is a bar area measuring 52.1sqm, adding a touch of sophistication and practicality for professional gatherings. Don't miss the opportunity to work in style and comfort in Block 8

## Features

**Zoning** Commercial

**Exterior**

Security

Yes

**Sizes**

Floor Size

129m²

